

DriscoPlex[®] MDPE & HDPE Molded Fittings

Purge Points



DriscoPlex[®] MDPE and HDPE Molded Fittings are available to meet your needs in compliance with ASTM D2513, D3261, F2897 and AWWA C906 product standards.

Made in the USA and produced from high quality MDPE and HDPE material, DriscoPlex[®] Fittings are manufactured from both PE 2708 resin and NSF-61/Annex G approved PE 4710 resin as listed in PPI-TR4.

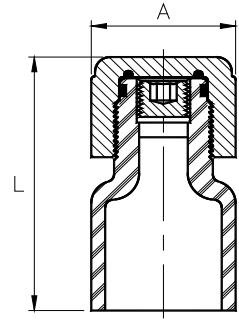
DriscoPlex[®] PE Fittings Advantages:

- ✓ Durable
- ✓ Leak Tight
- ✓ Excellent Flow
- ✓ Easy Install
- ✓ Light Weight
- ✓ Impact Resistant
- ✓ Fusibility
- ✓ Corrosion Resistant
- ✓ Chemical Resistant
- ✓ Life Cycle Cost
- ✓ Toughness
- ✓ Environmental

DriscoPlex [®] PE Fittings Material Physical Properties			
Property	Standard	HDPE Typical Values	MDPE Typical Values
Material Designation	ASTM F412	PE4170	PE 2708
Cell Classification	ASTM D3350	445574C (Black)	234373E
Density [4]	ASTM D1505	0.960 g/cc (Black)	0.939 g/cc (Yellow)
Melt Index [4]	ASTM D1238	0.08 g/10 min	0.18 g/10 min
Flexural Modulus [5]	ASTM D790	>120,000 psi	> 90,000 psi
Tensile Strength [5]	ASTM D638 Type IV	>3500 psi	> 2800 psi
SCG (PENT) [7]	ASTM F1473	10,000 hours	> 2000 hours
HDB at 73°F (23°C) [4]	ASTM D2837	1600 psi	1250 psi
Color; UV stabilizer [C] [E]	ASTM D3350	Black –	– Yellow

This is not a product specification and does not guarantee or establish specific minimum or maximum values or manufacturing tolerance for material or piping products to be supplied. Values obtained from tests of specimens taken from piping product may vary from these typical values.

Purge Points



Purge Point Double O-Ring with 1/2" Hex	DR	Dimension L x A (in)	Package Weight (lbs)	Package Quantity	Box Quantity	Part Number	
						MDPE	HDPE
1 1/4" IPS	DR 10	4.3 x 2.55	3.4	10	50	1100484 ^C	-
	DR 11		3.4	10	50	-	1100485
2" IPS	DR 9	4.3 x 2.55	4	10	50	-	1100511
	DR 11					1100482 ^C	1100483

This product flyer is intended for reference purposes. It should not be used in place of the advice from a licensed Professional Engineer. Additional fitting sizes and DR available. Contact Performance Pipe. www.performancepipe.com

Legend
C – CSA