

DriscoPlex[®] MDPE and HDPE Molded Fitting

Molded Rectangle Base Branch Saddles



DriscoPlex[®] MDPE and HDPE Molded Fittings are available to meet your needs in compliance with ASTM D2513, D3261, D2683, F2897 and AWWA C901 and C906 product standards.

Made in the USA and produced from only the highest rated MDPE and HDPE material, DriscoPlex[®] Fittings are manufactured from PE 2708 and NSF-61 approved PE 4710 resin as listed in PPI-TR4.

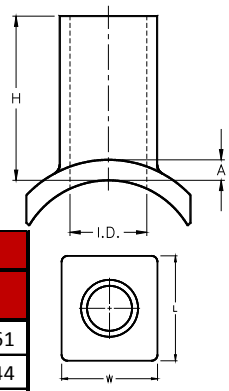
DriscoPlex[®] PE Fitting Advantages:

- ✓ Durable
- ✓ Leak Tight
- ✓ Excellent Flow
- ✓ Easy Install
- ✓ Light Weight
- ✓ Impact Resistant
- ✓ Fusibility
- ✓ Corrosion Resistant
- ✓ Chemical Resistant
- ✓ Life Cycle Cost
- ✓ Toughness
- ✓ Environmental

DriscoPlex [®] PE Fitting Material Physical Properties			
Property	Standard	MDPE Typical Values	HDPE Typical Values
Material Designation	ASTM F714	PE 2708	PE 4710
Cell Classification	ASTM D3350	234373E	445574C
Density [4] [2]	ASTM D1505	0.939 g/cc	0.960 g/cc
Melt Index [4] [3]	ASTM D1238	0.18 g/10 min	0.08 g/10 min
Flexural Modulus [5] [4]	ASTM D790	>90,000 psi	>120,000 psi
Tensile Strength [5] [3]	ASTM D638 Type IV	>2800 psi	>3500 psi
SCG (PENT) [7]	ASTM F1473	>2000 hours	>2000 hours
HDB at 73°F (23°C) [4] [3]	ASTM D2837	1250 psi	1600 psi
Color; UV stabilizer [C] [E]	ASTM D3350	- Yellow	Black -

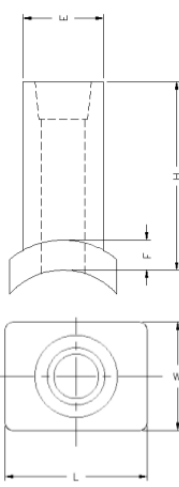
This is not a product specification and does not guarantee or establish specific minimum or maximum values or manufacturing tolerance for material or piping products to be supplied. Values obtained from tests of specimens taken from piping product may vary from these typical values.

Rectangle Base Butt Outlet



Main Size	Outlet Size	DR/Wall	Dimensions (in)					Package Quantity	Package Weight (lbs)	Box Quantity	Part Number	
			H	W	L	ID	A				MDPE	HDPE
1-1/4"	3/4" IPS	DR 11	3.1	1.97	2.4	0.81	0.5	10	2	50	-	1007961
1-1/2"											-	1076644
2"											-	1072475
3"											-	1072476
4"											-	1047504
6"											-	1087476
8"											-	1087475
10"											-	1102530
12"											-	-
2"	1-1/2" IPS	DR 11	2.47	2.35	2.68	1.47	0.51	10	2.5	10	-	1097410
3"											-	1047706
4"											-	1097411
6"											-	1047702
8"											-	1097412
10"											-	1102529
12"											-	1075399
2"	2" IPS	DR 11	3.88	3.92	4.32	1.85	0.63	10	6	10	1048628 ^C	1096220
3"											1048629 ^C	1097207
4"											1048630 ^C	1097208
6"											1048661 ^C	1097209
8"											1048579 ^C	1097210
10"											-	1047714
12"											1075774 ^C	1097211

Rectangle Base Dual Butt Outlet

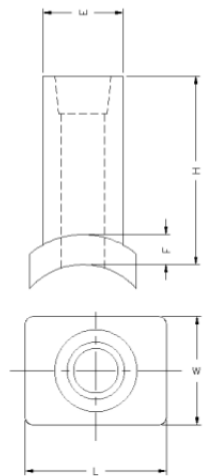
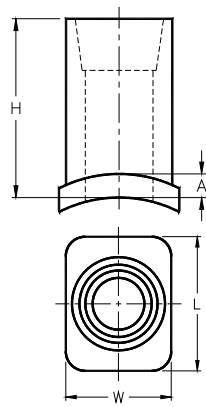


Main Size	Outlet Size	DR/Wall	Dimensions (in)					Package Quantity	Package Weight (lbs)	Box Quantity	Part Number	
			E	F	H	L	W				MDPE	HDPE
1-1/4"	1" IPS	DR 9.3	1.315	0.43	3.26	2.62	2.05	10	2	50	-	1105692
1-1/2"											-	1105693
2"											-	1105694
3"											-	1105695
4"											-	1105696
6"											-	1105697
8"											-	1105699
10"											-	1105700
12"											-	1105701
1-1/4"	1 1/4" IPS	DR 9.3	1.66	0.43	3.08	2.42	1.99	10	2.1	50	-	1111038
1-1/2"											-	1111038
2"											-	1105703
3"											-	1105705
4"											-	1105706
6"											-	1105708
8"											-	1105709
10"											-	1105710
12"											-	1105711

Legend
C – CSA

Rectangle Base Socket Outlet

Main Size	Outlet Size	Dimensions (in)				Package Weight (lbs)		Package Quantity	Part Number
		H	W	L	A	With 12" Sleeve	Without Sleeve	Without Sleeve	HDPE
1-1/4"	1/2" CTS	3.13	1.77	2.3	0.5	4.3	9.94	50	-
1-1/2"									-
2"									1096302
3"									1096826
4"									1096827
6"									1096303
8"									1096304
10"									-
12"									1104055
1-1/4"	1/2" IPS	2.96	1.77	2.28	0.28	4.3	8.66	50	-
1-1/2"									1103876
2"									1100153
3"									1100154
4"									1100155
6"									1100156
8"									1100157
10"									1100158
12"									1104816
1-1/2"	1-1/4" IPS	2.98	2.35	2.68	0.51	9.1	12.66	50	1096973
2"									1096974
3"									1096975
4"									1096976
6"									1096977
8"									1096978
10"									1098255
12"									1096979



Rectangle Base Dual Socket Outlet

Main Size	Outlet Size	DR/Wall	Dimensions (in)					Package Quantity	Package Weight (lbs)	Box Quantity	Part Number
			E	F	H	L	W				HDPE
1-1/4"	3/4" IPS	DR 9.3	1.315	0.43	3.26	2.62	2.05	10	2	50	1105692
1-1/2"											1105693
2"											1105694
3"											1105695
4"											1105696
6"											1105697
8"											1105699
10"											1105700
12"											1105701
1-1/4"	1" IPS	DR 11	1.66	0.43	3.08	2.42	1.99	10	2.1	50	-
1-1/2"											1111038
2"											1105703
3"											1105705
4"											1105706
6"											1105708
8"											1105709
10"											1105710
12"											1105711