

## DriscoPlex<sup>®</sup> MDPE and HDPE Molded Fitting

### Molded Round Base Branch Saddles



DriscoPlex<sup>®</sup> MDPE and HDPE Molded Fittings are available to meet your needs in compliance with ASTM D2513, D3261, D2683, F2897 and AWWA C901 and C906 product standards.

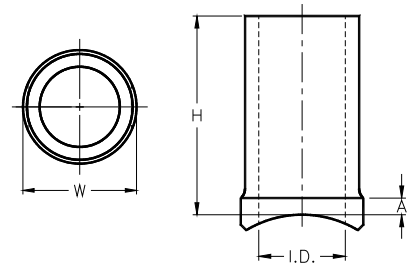
Made in the USA and produced from only the highest rated MDPE and HDPE material, DriscoPlex<sup>®</sup> Fittings are manufactured from PE 2708 and NSF-61 approved PE 4710 resin as listed in PPI-TR4.

#### DriscoPlex<sup>®</sup> PE Fitting Advantages:

- ✓ Durable
- ✓ Leak Tight
- ✓ Excellent Flow
- ✓ Easy Install
- ✓ Light Weight
- ✓ Impact Resistant
- ✓ Fusibility
- ✓ Corrosion Resistant
- ✓ Chemical Resistant
- ✓ Life Cycle Cost
- ✓ Toughness
- ✓ Environmental

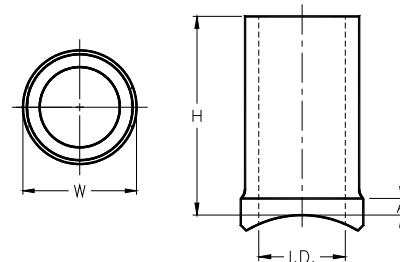
DriscoPlex <sup>®</sup> PE Fitting Material Physical Properties			
Property	Standard	MDPE Typical Values	HDPE Typical Values
Material Designation	ASTM F714	PE 2708	PE 4710
Cell Classification	ASTM D3350	234373E	445574C
Density [4] [2]	ASTM D1505	0.939 g/cc	0.960 g/cc
Melt Index [4] [3]	ASTM D1238	0.18 g/10 min	0.08 g/10 min
Flexural Modulus [5] [4]	ASTM D790	>90,000 psi	>120,000 psi
Tensile Strength [5] [3]	ASTM D638 Type IV	>2800 psi	>3500 psi
SCG (PENT) [7]	ASTM F1473	>2000 hours	>2000 hours
HDB at 73°F (23°C) [4] [3]	ASTM D2837	1250 psi	1600 psi
Color; UV stabilizer [C] [E]	ASTM D3350	- Yellow	Black -

This is not a product specification and does not guarantee or establish specific minimum or maximum values or manufacturing tolerance for material or piping products to be supplied. Values obtained from tests of specimens taken from piping product may vary from these typical values.



## Round Base Butt Outlet

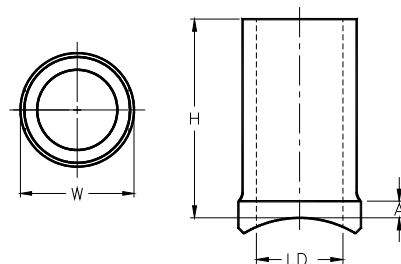
Main Size	Outlet Size	DR/Wall	Dimensions (in)				Package Quantity	Package Weight (lbs)	Box Quantity	Part Number	
			H	W	ID	A				MDPE	HDPE
1-1/4"	3/4" IPS	DR 9	3.1	1.5	0.76	0.5	10	1.6	50	-	1007960
1-1/4"		DR 11			0.81					-	1099800
1-1/2"		DR 9			0.76					-	1007966
2"		DR 9			0.76					-	1007972
2"		DR 11			0.81					-	1007973
3"		DR 9			0.76					-	1099694
3"		DR 11			0.81					-	1099801
4"		DR 9			0.76					-	1007986
4"		DR 11			0.81					-	1007987
6"		DR 9			0.76					-	1098204
6"		DR 11			0.81					-	1004164
8" - 24"		DR 9 & 11			0.76 & 0.81					-	-
1-1/4"		1" IPS			DR 9					3.1	1.5
1-1/4"	DR 11		1.02	-	1004119						
1-1/2"	DR 9		0.95	-	1007969						
1-1/2"	DR 11		1.02	-	1004127						
2"	DR 9		0.95	-	1007974						
2"	DR 11		1.02	-	1007975						
3"	DR 9		0.95	-	1007982						
3"	DR 11		1.02	-	1007983						
4"	DR 9		0.95	-	1007988						
4"	DR 11		1.02	-	1007989						
6"	DR 9		0.95	-	1098205						
6"	DR 11		1.02	-	1004165						
8"	DR 9		0.95	-	-						
8"	DR 11		1.02	-	1007994						
10" - 24"	DR 9 & 11		0.95 & 1.02	-	-						
2"	1-1/4" IPS		DR 11	3.3	1.81	1.29	0.25	10	2.0		
3"		DR 11	-							1097167	
4"		DR 11	-							1004191	
6"		DR 11	-							1097244	
8"		DR 11	-							1080687	
10"		DR 11	-							1095467	
12" - 24"		DR 11	-							-	
2"	1-1/2" IPS	DR 11	3.5	2.15	1.47	0.35	10	2.4	50	-	1097745
3"		DR 11								-	1066897
4"		DR 11								-	1099695
6"		DR 11								-	1075857
8"		DR 11								-	1101358
10"		DR 11								-	1089988
12" - 24"		DR 11								-	-



## Round Base Butt Outlet - Continued

Main Size	Outlet Size	DR/Wall	Dimensions (in)				Package Quantity	Package Weight (lbs)	Box Quantity	Part Number	
			H	W	ID	A				MDPE	HDPE
2"	2" IPS	DR 11	3.4	2.61	1.85	0.35	10	3.1	50	-	1007999 <sup>F1</sup>
3"		DR 11								-	1097230 <sup>F1</sup>
4"		DR 11								1048665 <sup>C</sup>	1008003 <sup>F1</sup>
6"		DR 11								-	1008007 <sup>F1</sup>
8"		DR 11								-	1008012 <sup>F1</sup>
10"		DR 11								1048666 <sup>C</sup>	1008043 <sup>F1</sup>
12"		DR 11								-	1011822 <sup>F1</sup>
14"		DR 11								-	1097170 <sup>F1</sup>
16"		DR 11								1005514 <sup>C</sup>	1097171 <sup>F1</sup>
18"		DR 11								-	1097203 <sup>F1</sup>
4"	3" IPS	DR 7	4.13	5.0	2.48	0.63	10	9.0	50	-	1097175
4"		DR 9			2.68					1005521	1008004 <sup>F2</sup>
4"		DR 11			2.86					-	1008005 <sup>F1</sup>
6"		DR 7			2.48					-	1086242
6"		DR 9			2.68					1048664	1008008 <sup>F2</sup>
6"		DR 11			2.86					-	1008009 <sup>F1</sup>
8"		DR 7			2.48					-	1097177
8"		DR 9			2.68					-	1008013 <sup>F2</sup>
8"		DR 11			2.86					-	1011823 <sup>F1</sup>
10"		DR 7			2.48					-	1097176
10"		DR 9			2.68					-	1097204 <sup>F2</sup>
10"		DR 11			2.86					-	1008045 <sup>F1</sup>
12"		DR 7			2.48					-	1097205
12"		DR 9			2.68					1005510	1008050 <sup>F2</sup>
12"		DR 11			2.86					-	1047846 <sup>F1</sup>
14"		DR 9			2.68					-	-
14"		DR 11			2.86					1048708 <sup>C</sup>	1081316 <sup>F1</sup>
16"		DR 9			2.68					-	-
16"		DR 11			2.86					-	1004250 <sup>F1</sup>
18"		DR 9			2.68					1005523	1047822 <sup>F2</sup>
18"	DR 11	2.86	-	1047842 <sup>F1</sup>							

**Legend**  
C – CSA    F1 – FM 150    F2 – FM 200  
\*FM Products only available in High Density Materials



## Round Base Butt Outlet - Continued

Main Size	Outlet Size	DR/Wall	Dimensions (in)				Package Quantity	Package Weight (lbs)	Box Quantity	Part Number								
			H	W	ID	A				MDPE	HDPE							
6"	4" IPS	DR 7	4.13	5.0	3.24	0.63	10	11	50	-	1077493							
6"		DR 9			3.44					1012181	1008010							
6"		DR 11			3.68					-	1009580 <sup>F1</sup>							
8"		DR 7			3.24					-	1097206							
8"		DR 9			3.44					-	1008014							
8"		DR 11			3.68					-	1008015 <sup>F1</sup>							
10"		DR 7			3.24					-	1071165							
10"		DR 9			3.44					-	1004228							
10"		DR 11			3.68					-	1008047 <sup>F1</sup>							
12"		DR 7			3.24					-	1071168							
12"		DR 9			3.44					-	1074470							
12"		DR 11			3.68					-	1008053 <sup>F1</sup>							
14"		DR 7			3.24					-	1005518	1084641						
14"		DR 9			3.44					-	1078074	-						
14"		DR 11			3.68					-	1048710 <sup>C</sup>	1015272 <sup>F1</sup>						
16"		DR 7			3.24					-	-	1100365						
16"		DR 9			3.44					-	-	1082417						
16"		DR 11			3.68					-	-	1004251 <sup>F1</sup>						
18"		DR 7			3.24					-	-	-						
18"		DR 9			3.44					-	-	-						
18"		DR 11			3.68					-	-	1004257 <sup>F1</sup>						
24"		DR 11			3.68					-	-	1047907 <sup>F1</sup>						
8"		6" IPS			DR 11					5.85	7.0	4.51	0.75	10	5.0	50	1005518	1098236 <sup>F1</sup>
10"					DR 11												-	1099673 <sup>F1</sup>
12"	DR 11		1048710	1099674 <sup>F1</sup>														
14"	DR 11		-	1099679 <sup>F1</sup>														
16"	DR 11		-	1099681 <sup>F1</sup>														
18"	DR 11		-	1099723 <sup>F1</sup>														
20"	DR 11		-	1099727 <sup>F1</sup>														
22"	DR 11		-	1099729 <sup>F1</sup>														
24"	DR 11		-	1099731 <sup>F1</sup>														
10"	8" IPS		DR 11	8.0	9.43	5.75	0.75	10	6.0								50	-
12"		DR 11	-							1031471 <sup>F1</sup>								
14"		DR 11	-							1100123 <sup>F1</sup>								
16"		DR 11	-							1100175 <sup>F1</sup>								
18"		DR 11	-							1100125 <sup>F1</sup>								
20"		DR 11	-							1100127 <sup>F1</sup>								
20"		DR 11	-							-								
24"		DR 11	-							-								

**Legend**  
C – CSA    F1 – FM 150    F2 – FM 200  
\*FM Products only available in High Density Materials