

DriscoPlex[®] MDPE & HDPE Molded Fittings

Molded Butt End Cap



DriscoPlex[®] MDPE and HDPE Molded Fittings are available to meet your needs in compliance with ASTM D2513, D3261, F2897 and AWWA C906 product standards.

Made in the USA and produced from high quality MDPE and HDPE material, DriscoPlex[®] Molded PE Fittings are manufactured from both PE 2708 resin and NSF-61/Annex G approved PE 4710 resin as listed in PPI-TR4.

DriscoPlex[®] PE Fittings Advantages:

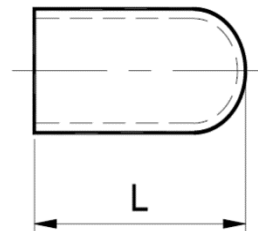
- ✓ Durable
- ✓ Leak Tight
- ✓ Excellent Flow
- ✓ Easy Install
- ✓ Light Weight
- ✓ Impact Resistant
- ✓ Fusibility
- ✓ Corrosion Resistant
- ✓ Chemical Resistant
- ✓ Life Cycle Cost
- ✓ Toughness
- ✓ Environmental

DriscoPlex[®] PE Fittings Material Physical Properties

Property	Standard	HDPE Typical Values	MDPE Typical Values
Material Designation	ASTM F412	PE4170	PE 2708
Cell Classification	ASTM D3350	445574C (Black)	234373E
Density [4]	ASTM D1505	0.960 g/cc (Black)	0.939 g/cc (Yellow)
Melt Index [4]	ASTM D1238	0.08 g/10 min	0.18 g/10 min
Flexural Modulus [5]	ASTM D790	>120,000 psi	> 90,000 psi
Tensile Strength [5]	ASTM D638 Type IV	>3500 psi	> 2800 psi
SCG (PENT) [7]	ASTM F1473	10,000 hours	> 2000 hours
HDB at 73°F (23°C) [4]	ASTM D2837	1600 psi	1250 psi
Color; UV stabilizer [C] [E]	ASTM D3350	Black –	– Yellow

This is not a product specification and does not guarantee or establish specific minimum or maximum values or manufacturing tolerance for material or piping products to be supplied. Values obtained from tests of specimens taken from piping product may vary from these typical values.

Molded Butt End Cap



Butt End Caps	DR/Wall	Dimensions L (in)	Package Quantity	Package Weight (lbs)	Box Quantity	Part Number		
						MDPE	HDPE	FM*
1/2" CTS	0.090 wall	2	10	0.01	200	1005162 ^C	1006413	-
3/4" CTS	0.090 wall	2.3	10	0.02	100	-	1007903	-
1" CTS	0.102 wall	2.3	10	0.05	100	1005203	1006416	-
	0.125 wall			0.05		-	1071088	-
1/2" IPS	DR 9.3	2.2	10	0.01	100	1049760	1010853	-
3/4" IPS	DR 11	2.3	10	0.05	100	1005176 ^C	1007900	-
1" IPS	DR 9	2.4	10	0.05	50	-	1007905	-
	DR 11			0.05		1005191 ^C	1007908	-
1 1/4" IPS	DR 9	3.31	10	0.10	50	-	1007912	-
	DR 10	3.94		0.10		1005214 ^C	-	-
	DR 11			0.10		-	1007915	-
1 1/2" IPS	DR 11	3.7	10	0.15	50	1005225 ^C	1007921	-
2" IPS	DR 7	4.25	10	0.30	40	-	1097162	1115056 ^{F3}
	DR 9			0.29		-	1007924	1003759 ^{F2}
	DR 11			0.24		1005239 ^C	1006420	1112915 ^{F1}
3" IPS	DR 7	4.8	20	0.80	20	-	1096047	1115088 ^{F3}
	DR 9			0.75		-	1010854	1014631 ^{F2}
	DR 11 / 11.5	3.94		0.50		1005254 ^C	1007930	1014632 ^{F1}
	DR 17			0.40		-	1097163	-
4" IPS	DR 7	8.5	10	1.20	10	-	1096046	1115057 ^{F3}
	DR 9			1.00		-	1074064	1003820 ^{F2}
	DR 11 / 11.5	4.25		0.85		1005271 ^C	1006428	1103271 ^{F1}
	DR 13.5			0.84		1005280 ^C	-	-
	DR 17			0.75		-	1097164	-
6" IPS	DR 7	9.88	6	4.45	6	-	1096045	1115058 ^{F3}
	DR 9			4.30		-	1007938	1050590 ^{F2}
	DR 11 / 11.5	5.2	5	2.58	5	1005285 ^C	1006436	1014634 ^{F1}
	DR 13.5			2.45		1005293 ^C	-	-
	DR 17			2.35		-	1097165	-
8" IPS	DR 7	5	1	6.00	1	-	1097166	1115059 ^{F3}
	DR 9			5.52		-	1073911	1014650 ^{F2}
	DR 11			4.40		1005306 ^C	1007942	1050617 ^{F1}
	DR 13.5			4.25		1005311 ^C	1097226	-
	DR 17			4.08		-	1097173	-

This product flyer is intended for reference purposes. It should not be used in place of the advice from a licensed Professional Engineer. Additional fitting sizes and DR available. Contact Performance Pipe. www.performancepipe.com

Legend
 C – CSA F1 – FM 200 F2 – FM 250 F3 – FM 335
 *FM Products only available in High Density Materials