

## DriscoPlex<sup>®</sup> MDPE & HDPE Molded Fittings

### Molded Socket Reducer



DriscoPlex<sup>®</sup> MDPE and HDPE Molded Fittings are available to meet your needs in compliance with ASTM D2513, D2683, F2897 and AWWA C901 and C906 product standards.

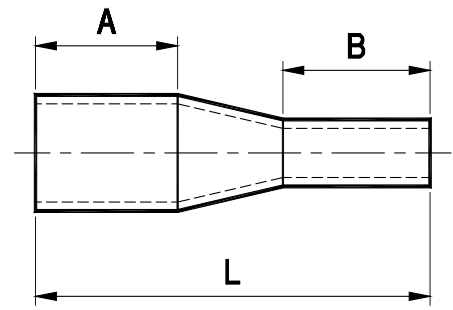
Made in the USA and produced from high quality MDPE and HDPE material, DriscoPlex<sup>®</sup> Fittings are manufactured from PE 2708 and NSF-61/Annex G approved PE 4710 resin as listed in PPI-TR4.

#### DriscoPlex<sup>®</sup> PE Fittings Advantages:

- ✓ Durable
- ✓ Leak Tight
- ✓ Excellent Flow
- ✓ Easy Install
- ✓ Light Weight
- ✓ Impact Resistant
- ✓ Fusibility
- ✓ Corrosion Resistant
- ✓ Chemical Resistant
- ✓ Life Cycle Cost
- ✓ Toughness
- ✓ Environmental

DriscoPlex <sup>®</sup> PE Fittings Material Physical Properties			
Property	Standard	HDPE Typical Values	MDPE Typical Values
Material Designation	ASTM F714	PE4170	PE 2708
Cell Classification	ASTM D3350	445574C (black)	234373E
Density [4]	ASTM D1505	0.960 g/cc (black)	0.939 g/cc (Yellow)
Melt Index [4]	ASTM D1238	0.08 g/10 min	0.18 g/10 min
Flexural Modulus [5]	ASTM D790	>120,000 psi	> 90,000 psi
Tensile Strength [5]	ASTM D638 Type IV	>3500 psi	> 2800 psi
SCG (PENT) [7]	ASTM F1473	>2000 hours	> 2000 hours
HDB at 73°F (23°C) [4]	ASTM D2837	1600 psi	1250 psi
Color; UV stabilizer [C] [E]	ASTM D3350	Black –	– Yellow

This is not a product specification and does not guarantee or establish specific minimum or maximum values or manufacturing tolerance for material or piping products to be supplied. Values obtained from tests of specimens taken from piping product may vary from these typical values.



## Molded Socket Reducer

Socket Reducers	Dimensions L x D x D1 (in)	Package Quantity	Package Weight (lbs)	Box Quantity	Part Number	
					MDPE	HDPE
1/2" IPS X 1/2" CTS	2.09 x 1.25 x 1.25	10	0.57	80	1005325 <sup>C</sup>	-
3/4" IPS X 1/2" IPS	1.97 x 1.47 x 1.47	10	0.10	50	1005370 <sup>C</sup>	-
3/4" IPS X 1/2" CTS	2.50 x 1.47 x 0.93	10	0.06	50	1005326 <sup>C</sup>	1096288
1" CTS X 1/2" IPS	2.00 x 1.81 x 1.24	10	0.12	40	1047409 <sup>C</sup>	-
1" CTS X 3/4" IPS	2.58 x 1.80 x 1.46	10	0.11	40	1047471 <sup>C</sup>	1096445
1" CTS X 1/2" CTS	2.13 x 1.81 x 0.97	10	0.10	40	1005465 <sup>C</sup>	-
1" CTS X 3/4" CTS	2.13 x 1.81 x 1.47	10	0.12	40	1047410	-
1" IPS X 1/2" IPS	2.00 x 1.81 x 1.24	10	0.10	40	1005371 <sup>C</sup>	-
1" IPS X 3/4" IPS	2.65 x 1.81 x 1.46	10	0.10	40	1005374 <sup>C</sup>	1096791
1" IPS X 1/2" CTS	2.13 x 1.81 x 0.97	10	0.10	40	1005328 <sup>C</sup>	-
1" IPS X 1" CTS	1.97 x 1.81 x 1.53	10	0.10	40	1005333 <sup>C</sup>	-
1 1/4" IPS X 1" CTS	2.95 x 2.32 x 1.81	10	0.20	30	1005339 <sup>C</sup>	-
1 1/4" IPS X 3/4" IPS	2.95 x 2.32 x 1.46	10	0.15	30	1005377 <sup>C</sup>	1096413
1 1/4" IPS X 1" IPS	2.95 x 2.32 x 1.80	10	0.19	50	1005378 <sup>C</sup>	1096412
1 1/2" IPS X 1 1/4" IPS	2.31 x 2.66 x 2.66	10	0.25	50	1047549 <sup>C</sup>	1096411
2" IPS X 1" CTS	3.02 x 3.32 x 1.86	10	0.30	10	1047594 <sup>C</sup>	-
2" IPS X 1" IPS	3.03 x 3.32 x 1.86	10	0.29	10	1005388 <sup>C</sup>	1004131
2" IPS X 1 1/4" IPS	2.94 x 3.32 x 2.31	10	0.35	10	1005397 <sup>C</sup>	1096414
2" IPS X 1 1/2" IPS	3.75 x 3.32 x 2.66	10	0.46	10	1047595 <sup>C</sup>	1096854

This product flyer is intended for reference purposes. It should not be used in place of the advice from a licensed Professional Engineer. Additional fitting sizes and DR available. Contact Performance Pipe. [www.performancepipe.com](http://www.performancepipe.com)

**Legend**

C - CSA