

DriscoPlex[®] MDPE & HDPE Molded Fittings

Molded Butt 90° Elbow



DriscoPlex[®] MDPE and HDPE Molded Fittings are available to meet your needs in compliance with ASTM D2513, D3261, F2897 and AWWA C901 and C906 product standards.

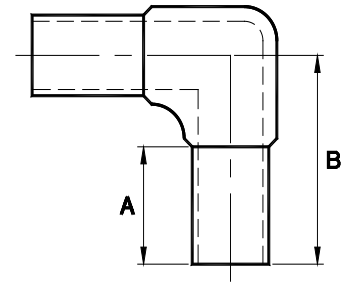
Made in the USA and produced from high quality MDPE and HDPE material, DriscoPlex[®] Fittings are manufactured from PE 2708 and NSF-61/Annex G approved PE 4710 resin as listed in PPI-TR4.

DriscoPlex[®] PE Fittings Advantages:

- ✓ Durable
- ✓ Leak Tight
- ✓ Excellent Flow
- ✓ Easy Install
- ✓ Light Weight
- ✓ Impact Resistant
- ✓ Fusibility
- ✓ Corrosion Resistant
- ✓ Chemical Resistant
- ✓ Life Cycle Cost
- ✓ Toughness
- ✓ Environmental

DriscoPlex [®] PE Fittings Material Physical Properties			
Property	Standard	HDPE Typical Values	MDPE Typical Values
Material Designation	ASTM F714	PE4710	PE 2708
Cell Classification	ASTM D3350	445574C (black)	234373E
Density [4]	ASTM D1505	0.960 g/cc (black)	0.939 g/cc (Yellow)
Melt Index [4]	ASTM D1238	0.08 g/10 min	0.18 g/10 min
Flexural Modulus [5]	ASTM D790	>120,000 psi	> 90,000 psi
Tensile Strength [5]	ASTM D638 Type IV	>3500 psi	> 2800 psi
SCG (PENT) [7]	ASTM F1473	>2000 hours	> 2000 hours
HDB at 73°F (23°C) [4]	ASTM D2837	1600 psi	1250 psi
Color; UV stabilizer [C] [E]	ASTM D3350	Black –	– Yellow

This is not a product specification and does not guarantee or establish specific minimum or maximum values or manufacturing tolerance for material or piping products to be supplied. Values obtained from tests of specimens taken from piping product may vary from these typical values.



Molded Butt 90° Elbow

Butt 90° Elbow	DR/Wall	Dimensions A x B (in)	Package Quantity	Package Weight (lbs)	Box Quantity	Part Number		
						MDPE	HDPE	FM*
1/2" CTS	0.090" wall	1.69 x 1.79	10	0.10	100	1049239	-	-
3/4" IPS	DR 11	1.72 x 2.94	10	0.08	50	1005178 ^C	1007901	-
1" IPS	DR 9	1.72 x 3.06	10	0.15	50	-	1079221	-
	DR 11		10	0.12	50	1005193 ^C	1007909	-
1 1/4" IPS	DR 9	2.50 x 3.88	10	0.34	20	-	1007913	-
	DR 10	3.13 x 4.50	10	0.35	20	1005215 ^C	-	-
	DR 11		10	0.32	20	-	1007916	-
1 1/2" IPS	DR 11	3.00 x 4.50	10	0.41	10	-	1007922	-
2" IPS	DR 7	2.88 x 5.06	10	0.90	10	-	1097091	-
	DR 9		10	0.78	10	-	1007925	1003762 ^{F2}
	DR 11		10	0.67	10	1005241 ^{C,1}	1006422	1003774 ^{F1}
3" IPS	DR 7	3.00 x 6.00	4	2.20	4	-	1096048	-
	DR 9		4	1.90	4	-	1096051	1003786 ^{F2}
	DR 11 / 11.5	3.00 x 5.63	4	1.67	4	1007514 ^{C,1}	1007932	1003802 ^{F1}
	DR 17		4	1.60	4	-	1097223	-
4" IPS	DR 7	3.00 x 6.00	4	4.70	4	-	1096050	-
	DR 9		4	4.02	4	-	1007936	1050548 ^{F2}
	DR 11 / 11.5	3.00 x 6.75	4	3.50	4	1005275 ^{C,1}	1006432	1003848 ^{F1}
	DR 13.5		4	3.40	4	1005282 ^C	-	-
	DR 17		4	3.15	4	-	1097090	-
6" IPS	DR 7	4.25 x 8.63	2	13.25	2	-	1096049	-
	DR 9		2	12.95	2	-	1080050	1003879 ^{F2}
	DR 11 / 11.5	4.00 x 8.25	2	7.98	2	1005289 ^{C,1}	1006440	1003895 ^{F1}
	DR 13.5		2	7.80	2	1005295 ^C	-	-
	DR 17		2	7.55	2	-	1098336	-
8" IPS	DR 7	6.00 x 11.81	1	27.00	1	-	1007947	-
	DR 9		1	26.00	1	-	1071089	1050613 ^{F2}
	DR 11		1	20.27	1	1005309 ^C	1007944	1003933 ^{F1}
	DR 13.5		1	19.95	1	1005314 ^C	-	-
	DR 17		1	19.30	1	-	1098783	-

This product flyer is intended for reference purposes. It should not be used in place of the advice from a licensed Professional Engineer. Additional fitting sizes and DR available. Contact Performance Pipe. www.performancepipe.com

Legend

C - CSA I - IAPMO F1 - FM 150 F2 - FM 200
*FM Products only available in High Density Materials