

High Density Polyethylene (HDPE) Electrofusion Accessories

Electrofusion Controllers / Adapters

EF Accessory Description	Weight, lbs	Box Quantity	Drawing Reference	Part Number	Manufacturer Reference
Polymatic+ Universal EF Processor (Universal Leads 4.0/4.7mm)	45.19	1	A	1120866	3F2306-303
4.7mm to 4.0mm EF Terminal Adapter Tips	1.00	1	B	1121126	2-0300-017
4.7mm to 4.0mm EF Angled Terminal Adapter Tips	1.00	1	C	1121177	2-0300-004



A



B



C

Pipe Clamping Tools

EF Accessory Description	Weight, lbs	Box Quantity	Drawing Reference	Part Number	Manufacturer Reference
Adjustable Pipe Clamp 1/2" IPS - 2" IPS	9.25	1	1	1121127	4_4300_000
Adjustable Pipe Clamp 1" IPS - 4" IPS	10.60	1	2	1123104	4_4300_001
Adjustable Pipe Clamp 4" IPS - 8" IPS	28.66	1	3	1120872	4_4300_002
Strap Adjustable Pipe Clamp 2" IPS - 10" IPS	24.91	1	4	1120873	4_4300_025
Strap Adjustable Pipe Clamp w/Angle pc 4-22"IPS	52.91	1	5	1120874	4_4300_023



1



2



3



4



5

Pipe Cleaning and Scraping Tools

EF Accessory Description	Weight, lbs	Box Quantity	Drawing Reference	Part Number	Manufacturer Reference
Tangit Detergent for Cleaning EF	2.42	1 (1000ml)	A	1120867	5_2000_001
Tangit Cleaning Pads for EF	0.66	100 wipes per container	B	1120868	5_5200_002
EF Mark Pen (mark scrape/stab depth)	0.37	1	C	1120869	FSA2388PEN00000
Rotational Scraper ½" IPS – 4" IPS/DIPS	3.53	1	D	1121128	4_4200_031
Rotational Scraper 3" IPS – 8" IPS	8.82	1	E	1120870	4_4200_0032
Rotational Scraper 4" IPS – 10" IPS/DIPS	11.90	1	F	1121129	4_4200_033
Pipe End Scraper 3" IPS – 6" IPS	9.48	1	G	1121175	4_4200_015
Pipe End Scraper 4" IPS – 10" IPS	14.55	1	H	1121176	4_4200_027
Pipe End Scraper 8" IPS – 16" IPS	20.72	1	I	1121130	4_4200_016
Chain Scraper 4" IPS – 14 IPS/DIPS	10.58	1	J	1120871	4_4200_013
Chain Scraper 10" IPS – 30 IPS	21.16	1	K	1121131	4_4200_009



A



D



G



J



B



E



H



K



C



F



I

Installation Tools for XL Branch Saddles

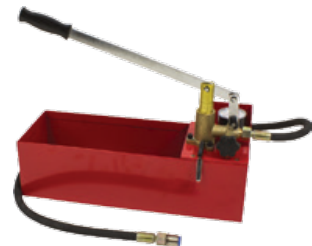
EF Accessory Description	Weight, lbs	Box Quantity	Drawing Reference	Part Number	Manufacturer Reference
EF XL BR SAD Kit Split 3&4"IPS/DIPS	29.76	1	1	1120875	4_4701_004
EF CoreCut Kit w/hole saws for EF Sad	10.8	1	2	1120876	4_4702_002
EF Pressure Test Pump w/ Adapter	15.65	1	3	1120877	4_4701_005



1



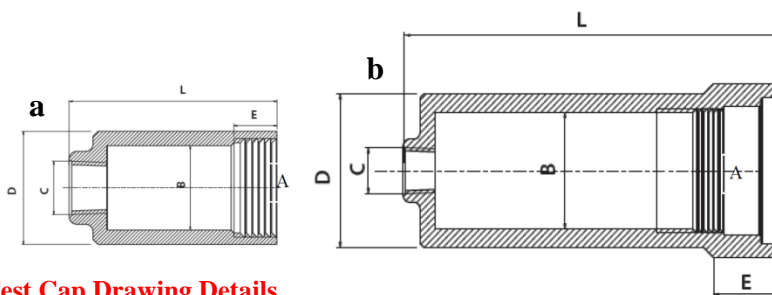
2



3

Installation Tools for Tapping Tees

EF Accessory Description	Weight, lbs	Box Quantity	Drawing Reference	Part Number	Manufacturer Reference
PRES. TEST CAP 1/2 NPT 1 1/4"-2" Tap Tee	0.33	1	a	1120864	29601001
PRES. TEST CAP 1/2 NPT 3"-8" Tap Tee	1.94	1	b	1120865	29601002
EF Tapping Tee Tool w/ 12mm Hex	5.00	1	-	1120878	2_4701_035



Test Cap Drawing Details

Tapping Tee Saddle (Main Pipe Size)	Thread "C"	Thread "A"	"B" inches	"D" inches	"E" inches	"L" inches
1-1/4" - 2"	1/2" NPT	10 TPI	1.34	1.77	0.67	3.5
3" - 8"	1/2" NPT	10 TPI	2.13	3.03	1.23	7.16

Before using this product, the user is advised and cautioned to make its own determination and assessment of the safety and suitability of the product for the specific use in question and is further advised against relying on the information contained herein as it may relate to any specific use or application. It is the ultimate responsibility of the user to ensure that the product is suited and the information is applicable to the user's specific application. Chevron Phillips Chemical Company LP does not make, and expressly disclaims, all warranties, including warranties of merchantability or fitness for a particular purpose, regardless of whether oral or written, express or implied, or allegedly arising from any usage of any trade or from any course of dealing in connection with the use of the information contained herein or the product itself. The user expressly assumes all risk and liability, whether based in contract, tort or otherwise, in connection with the use of the information contained herein or the product itself. Further, information contained herein is given without reference to any intellectual property issues, as well as federal, state or local laws which may be encountered in the use thereof. Such questions should be investigated by the user.