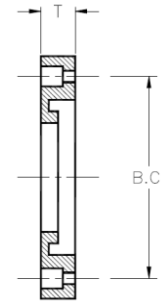


DriscoPlex[®] Fittings

Ductile Iron Backup Rings



Convuluted Back-Up Ring								
Nominal OD	Actual OD (in)	Pressure Class (psi)	Dimensions B.C. x T (in)	Weight (lbs)	Bolt Length	Bolt Hole Diameter	Bolt Number	Part Number
1 1/2"	1.9	335	3.88 x 0.69	1.6	4.5	5/8	4	1105928 ^F
2"	2.375	275	4.75 x 0.75	2.5	4.5	3/4	4	1101130 ^F
3"	3.5	335	6.0 x 0.94	3.5	4.5	3/4	4	1101131 ^F
4"	4.5	335	7.5 x 0.94	4.8	5.5	3/4	8	1101182 ^F
6"	6.625	335	9.5 x 1.0	6.75	6.5	7/8	8	1101183 ^F
8"	8.625	335	11.75 x 1.12	10	7.5	7/8	8	1101184 ^F
10"	10.75	335	14.25 x 1.15	15	8.5	1	12	1101185 ^F
12"	12.75	335	17.00 x 1.50	24	9	1	12	1101187 ^F
14"	14"	275	18.34 x 1.63	33	10	1 1/8	12	1101189 ^F
16"	16"	335	21.25 x 1.88	49	10.5	1 1/8	16	1101191 ^F
18"	18"	275	22.35 x 2.00	51	11.5	1 1/4	16	1101193 ^F

This product flyer is intended for reference purposes. It should not be used in place of the advice from a licensed Professional Engineer. Additional fitting sizes and DR available. Contact Performance Pipe. www.performancepipe.com

Legend

F - FM 150, FM 200 and FM 267