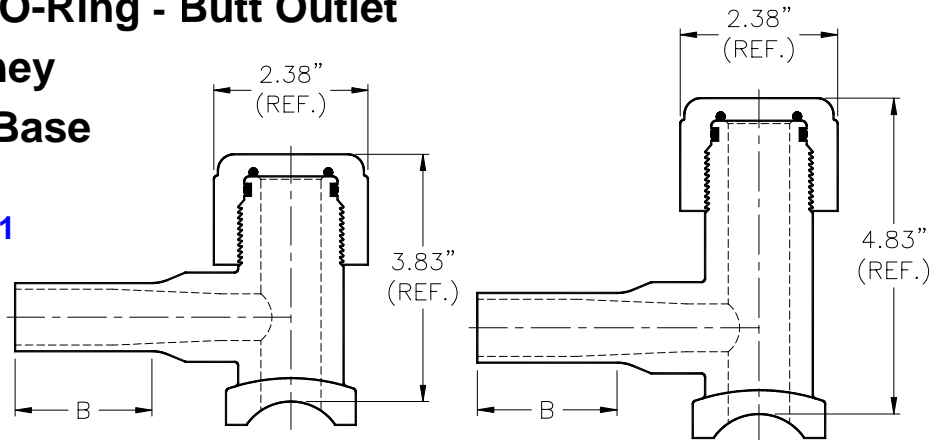


# Gas Tapping Tee\* Double O-Ring - Butt Outlet Standard/Extended Chimney Standard & Large Round Base

Produced to ASTM D2513 and D3261



Main Size	Outlet Size	Butt Outlet DR/Wall	Dimension B (in)	CSA <sup>2</sup>	Protective Sleeves	Package Weight (lbs) for Std. Chimney		Package Weight (lbs) for Ext. Chimney		Ref. Number
						Std. <sup>A</sup> Base	Lrg. <sup>A</sup> Base	Std. <sup>B</sup> Base	Lrg. <sup>B</sup> Base	
1 1/4" - 18" IPS <sup>1</sup>	1/2" CTS	0.090	1.74	x <sup>2</sup>	PS1	3.9	4.3	6.3	7.1	*M*SRBTT* For Standard Base OR *M*LRBTT* For Large Base
	3/4" CTS	0.090	1.90		PS1A	3.8	4.2	6.3	6.7	
	1" CTS	0.102	2.20		PS3	3.8	4.2	5.9	6.1	
1 1/4" - 18" IPS <sup>1</sup>	3/4" IPS	DR 11	2.11	x <sup>2</sup>	PS1A	6.0	6.5	5.9	6.8	
		DR 9	2.54	x <sup>2</sup>		PS3	6.2	6.7	6.2	
	DR 11	6.1			6.6		6.1	6.9		
	1 1/4" IPS	DR 9	2.25			4.0	4.5	6.3	7.1	
		DR 11				3.8	4.3	6.2	6.9	

1 - See Bulletin PP 11.03 for cutter limitations (SDR specific)  
 2 - CSA available as DriscoPlex<sup>®</sup> 6500 MDPE materials ONLY through 8" mains  
 2 - CSA approved on Standard Body Only (not Extended)  
 x - Indicates certification/approval for appropriate application or test.  
 - Drawing No. CU70D351 for Standard Chimney & CU70D352 for Extended Chimney

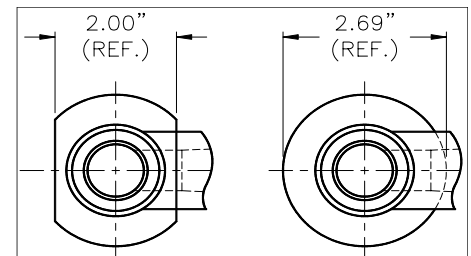
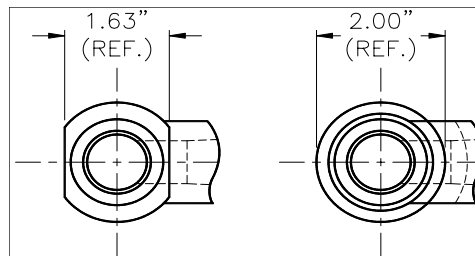
<sup>A</sup> Standard Package Quantity - 10  
<sup>B</sup> Standard Package Quantity - 5  
 12" Sleeve supplied with list price above  
 Refer to Bulletin PP 11.04 for additional Sleeve

Standard base for under 2" IPS pipe sizes

Standard base for 2" IPS and over pipe sizes

Large round base for 2" IPS only pipe sizes

Large round base for 3" IPS and over pipe sizes



**NOTE:** Refer to Bulletin PP 11.01 for Std. Tapping Tee Accessories  
 \*Fittings available in PE 2406 and DRISCOPIPE<sup>®</sup> 8100 Series

**\*DriscoPlex<sup>®</sup> tapping tees and cutters are designed and intended to tap polyethylene mains of wall thickness as defined in PP11.03. Special precautions are necessary when working in gaseous environments or elevated temperatures. Consult your Operations and Safety Manuals for specific recommendations. The use of these tapping tees and cutters beyond this scope is at the user's own risk.**